

# Human IgG1 Isotype-MMAE (Dar4)

## Product Information

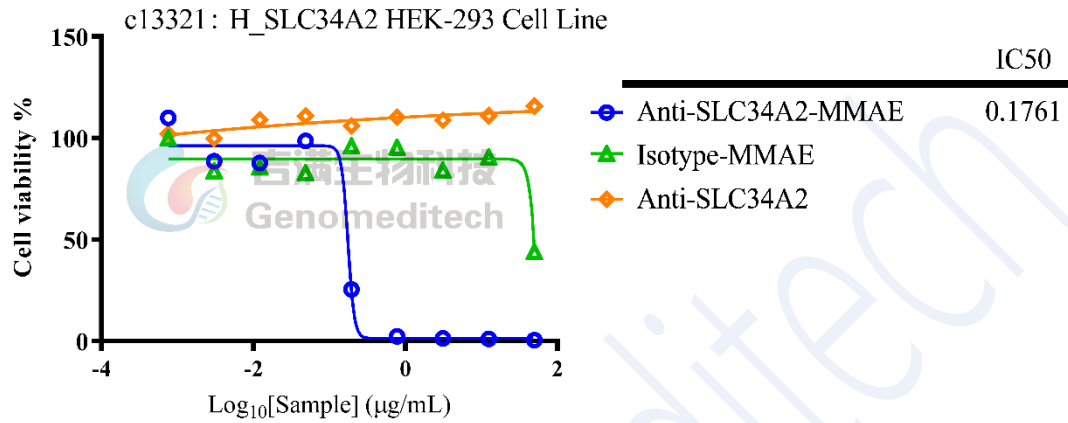
<b>Product Name</b>	Human IgG1 Isotype-MMAE (Dar4)
<b>Storage temp.</b>	Store at +4°C short term. Store at -80°C for 36 months, avoiding freeze/thaw cycles.
<b>Catalog# / Size</b>	<b>GM-77422AB-100 / 100 µg</b> <b>GM-77422AB-1000 / 1 mg</b>

## Antibody Information

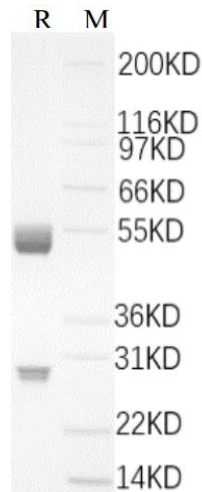
<b>Expression System</b>	CHO
<b>Purity</b>	> 95% as determined by SDS-PAGE
<b>Aggregation</b>	< 5% as determined by SEC-HPLC
<b>Drug-to-Antibody Ratio (DAR)</b>	4.0
<b>Endotoxin</b>	< 1 EU/mg, determined by LAL gel clotting assay
<b>Sterility</b>	0.22 µm Filtered
<b>Target</b>	/
<b>Clone</b>	NA
<b>Alternative Names</b>	/
<b>Source/Isotype</b>	Human IgG1(KDEL), kappa
<b>Application</b>	Negative control of Cytotoxicity Assay
<b>Formulation</b>	20 mM Histidine, pH 6.0

## Data Examples

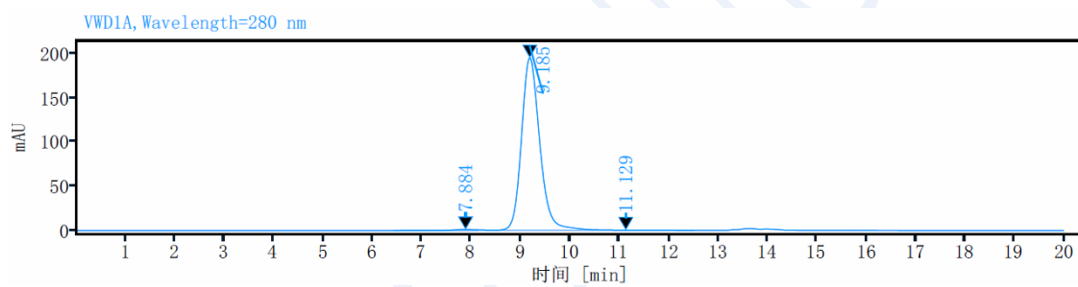
- Cytotoxicity Assay**
- Plating H\_SLC34A2 HEK-293 Cell Line (Genomeditech Cat. # C13321),  $3 \times 10^4$  cells/mL suspension, and add 100  $\mu$ L/well, on the first day.
  - Remove the supernatant of the above-mentioned plated cells.
  - For Anti-SLC34A2-MMAE (Isotype-MMAE or Anti-SLC34A2): Add 200  $\mu$ L drugs (50  $\mu$ g/mL) in gradient dilution each well, and incubate at 37 °C for 96 h.
  - Measured the luciferase activities by using GMTiter™ Luminescent Cell Viability Assay (Genomeditech Cat. # GM-040504C) according to recommended protocol.



## SEC-HPLC

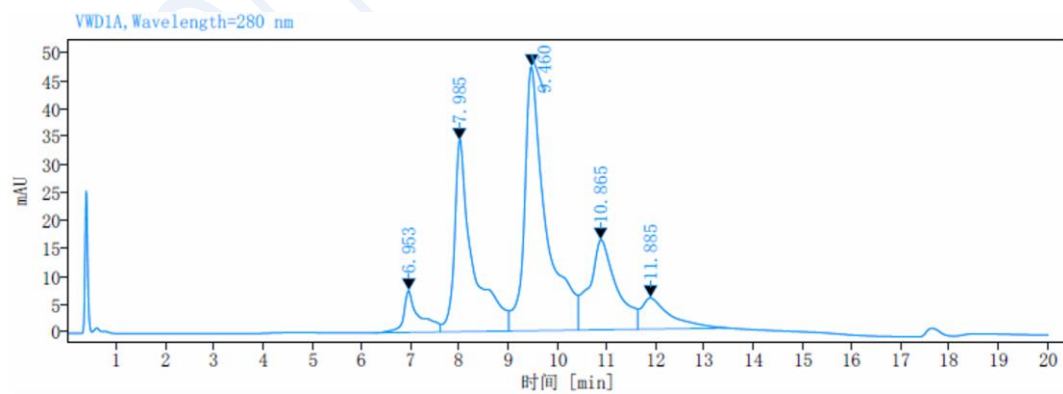


## SEC-HPLC



The purity of this product is greater than 95% verified by SEC-HPLC.

## HIC-HPLC



The drug-to-antibody ratio (DAR) of this product is 3.91